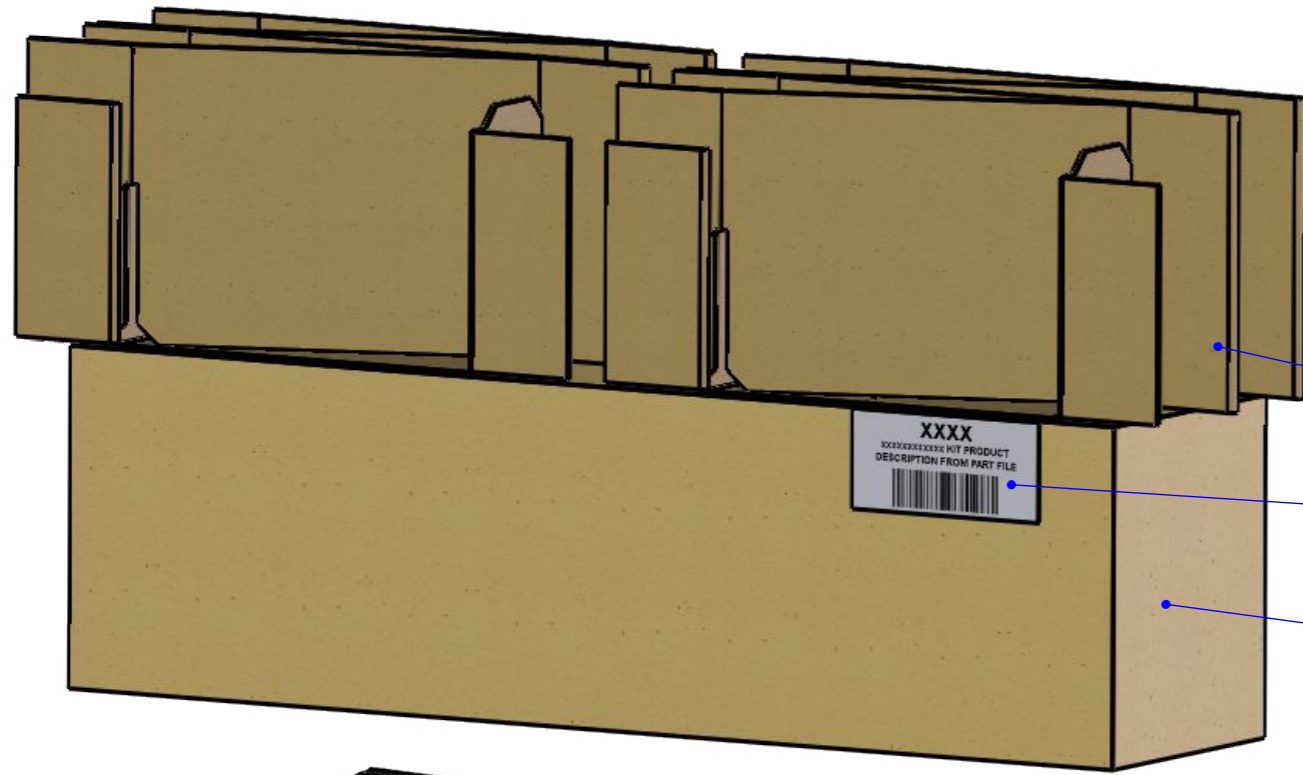


ISSUE:	DRAWN BY:	CHECKED BY:	CRF NO:	DATE:	DESCRIPTION:
a	CH	KB	1335	03/10/16	



PA03 x 2

LA038 x 1
Printed Label, Kit Box

PA89 x 1
Plain Cardboard Box, 560 x 140 x 160, TGS

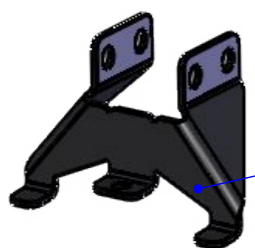


MS201 x 6
Delta Bar Saddle, M8

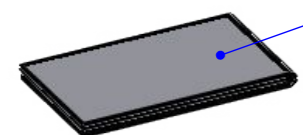


MS506 x 2
JC - Outer Leg

LA029 x 4
Leg Label, Small



MS507 x 2
JC - Inner Leg



INJD3D x 1
Customer Instruction Sheet(s)



FK902 x 1
Leg fixing kit for JC3

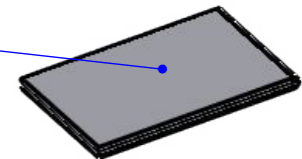
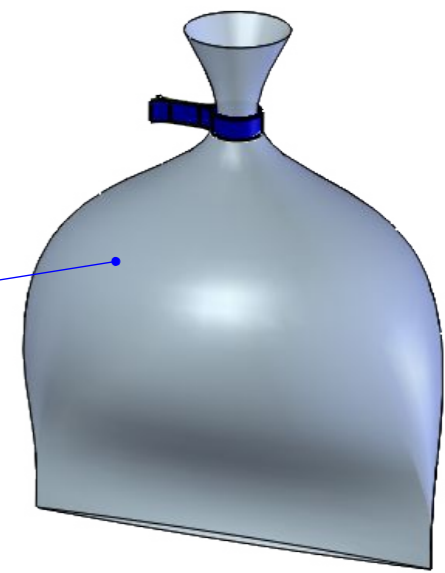
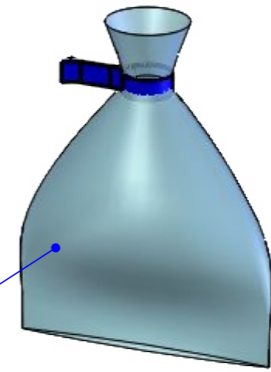
MS518L x 1
'JD' Rear Leg LH

FK168 x 1
Fitting Kit, 6 Leg Saddle Fixings



MS518R x 1
'JD' Rear Leg RH

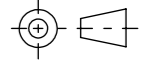
RPI001EU x 1
Rhino Products Information Sheet



- Notes:
1. Fit Labels to Legs as shown above.
 2. Fold Printed Label along edge of Kit Box.
 3. Put through heat tunnel.



DRAWING NO: JD3D (1 of 4)	DESCRIPTION: 3 Bar "JD" Fitting Kit Delta Bars		DESIGNED BY: C. Horsefield 03/10/16
MATERIAL SIZE: n/a	MATERIAL SPEC: n/a	FINISH: n/a	WEIGHT: 3.85Kg
© NOTE: This drawing is the property of Rhino Products Ltd and must not be used or copied without written consent. The Rhino Products name and logo must remain clearly visible in any reproduction.			

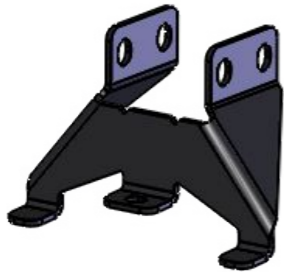
 THIRD ANGLE PROJECTION	
UNLESS OTHERWISE SPECIFIED: DIMENSIONS ARE IN MM	
0.00	±0.2
0.0	±0.5
ANG	±0.5°
DERIVED DIMENSIONS SHOWN IN BRACKETS	
DEBURR AND BREAK ALL SHARP EDGES	
SHEET SIZE A3	SHEET SCALE: 2:7



MS201 x 6



MS506 x 2



MS507 x 2



MS518L x 1



MS518R x 1

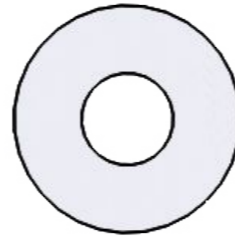


PS030 x 6

(1:1)



FB003 (M8 x 65) x 12



FW002 (M8) x 24



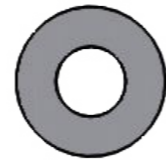
FN006 (M8) x 12



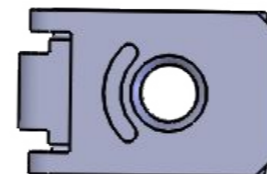
FS041 (M6 x 16) x 6



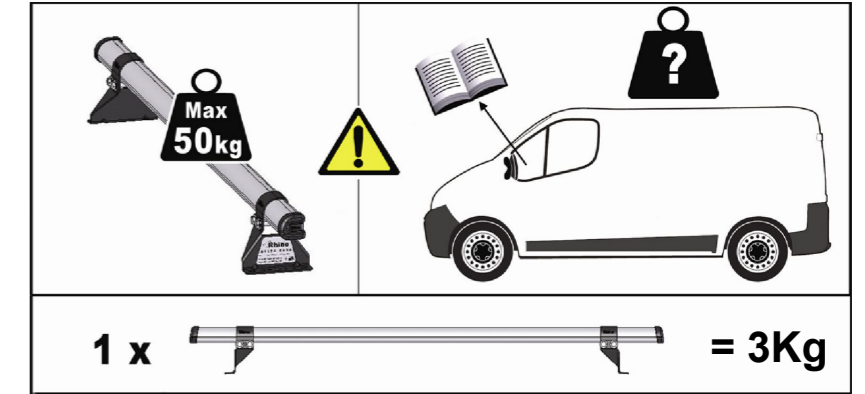
FW008 (M6) x 6



FW001 (M6) x 6



FN020 (M6) x 6



10mm x 1



13mm x 2

